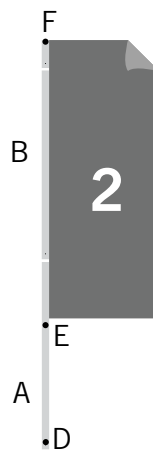
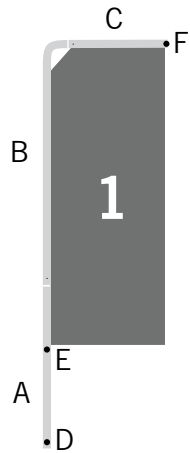


Q-Frame[®] CS200 Construction Sheet

R4.050508



AVAILABLE SIZES
 Banner Arm:
 Small 1
 Small 2
 Medium
 Large
 Without Banner Arm:
 Small
 Medium
 Large

Available Q-Frame[®] CS200 bases



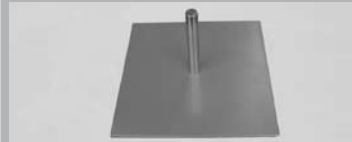
Ground Sleeve Bearing



Cross Base



Square Base 18x30



Square Base 30x30



Ground Sleeve no Bearing



Auger Sleeve



Economy Cross Base



Car Base



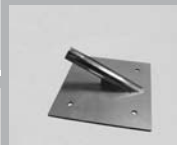
Economy Car Base



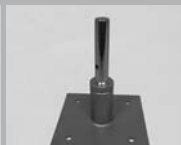
Square Base 40x40



Square Base 55x55



Screw on Base 30°



Screw on Base 90°



P1 Plastic Base



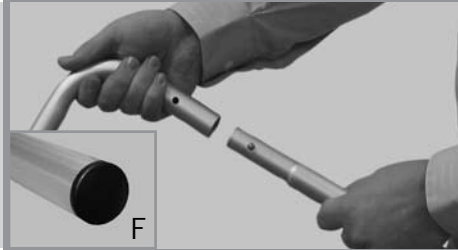
P2 Plastic Base



- Remove all components from the Economy Bag (or optional Carry Case) and examine to make sure all pieces are included and are not damaged.

- Insert pole A into the bottom of pole B. Press down on the button and slide pole A into pole B until the button is depressed into the pre-drilled hole.

- Repeat for all poles.



- Place End Cap F on the end of top pole.

OPTIONAL BANNER ARM:

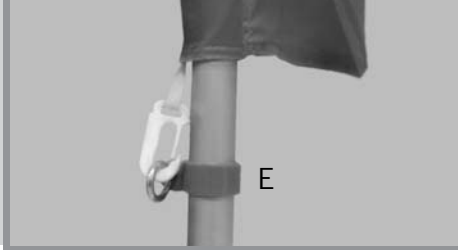
- Take pole C and insert into pole B using method explained in Step 1 above. Place End Cap F on the end of banner arm.



- Slide the graphic down toward the bottom of the pole until fully fitted.

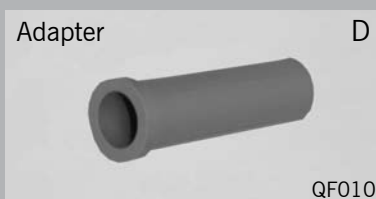
OPTIONAL BANNER ARM:

- Starting at the bottom of the graphic, slide the banner arm into the pole sleeve, around the corner and continue toward the bottom of the pole.



- Flag should be pulled taut and secured with Plastic Snap Hook to Plastic Clip E.

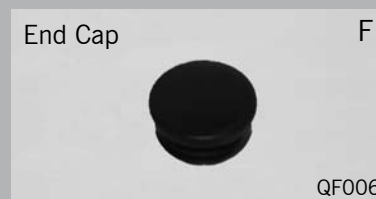
- Mount pole onto provided base. (shown to the right) Use Adapter D if applicable.



Adapter has to be used with the CS200 system to use most bases shown to the right.



The Plastic Clip will secure the flag and can be easily re-positioned on the pole to adjust for different flag sizes.



The End Cap will prevent unnecessary wear of the graphic once the CS200 system is assembled.



Do not fly your Q-Frame[®] CS200 in extreme winds (24-31mph or 6bft and higher) and/or thunderstorms. Do not use near overhead wires. User must read and observe construction sheet. If this is not done correctly it may result in damage to the unit, injury, or death, and all warranties will be void.

