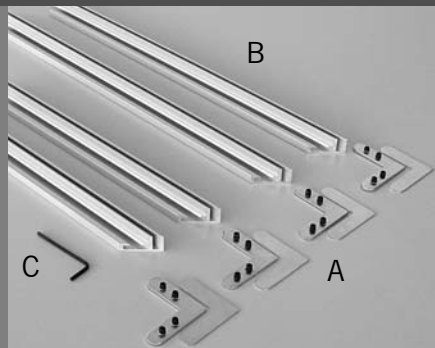


## Q-Frame<sup>®</sup> Tex 15



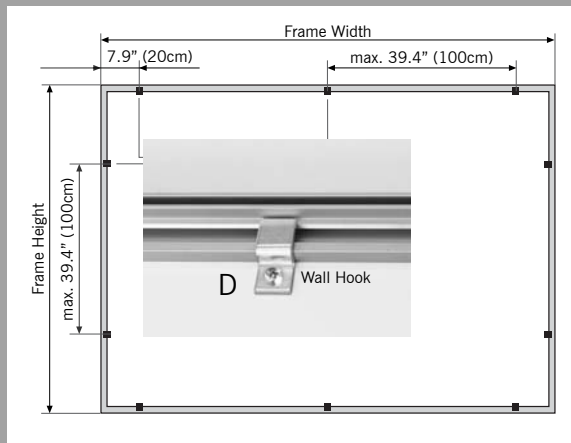
· Remove all components and review to ensure all have been received and none are damaged or missing.

Included in delivery:

- 4 customized aluminum profile sections (B)
- 4 Edge Connectors (A) with allen wrench (C)
- Wall Hooks (D)



1. Take one pair of Edge Connectors (A) and one aluminum profile section (B) and insert the Edge Connector at the end of the section into the groove. Next, use another aluminum profile section to insert the opposite end of the Edge Connector into its groove. You should have created a right angle at this point.
2. Once the corner is created, use the allen wrench (C) to hand tighten the screws.
3. Repeat step 1 and 2 to complete the frame. You may need to make adjustments to make frame join precisely.



Needed for wall mounting:  
Wall plugs and screws  
Screwdriver

1. Hold assembled frame into position on wall. With the aid of another person, screw hooks into correct position on the wall.
2. Hooks should be installed using the suggestions below:
  - a. There should be no more than 39.4" (100cm) of space between each hook.
  - b. Leaving 7.9" (20cm) of space from the hooks to the corners is recommended.
3. Once frame is installed, mount print.

## Q-Frame<sup>®</sup> Tex 25



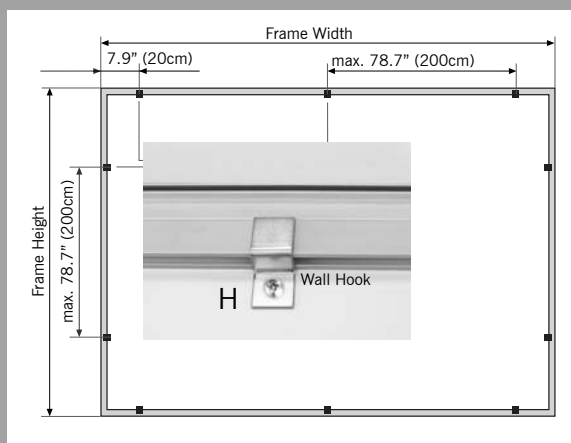
· Remove all components and review to ensure all have been received and none are damaged or missing.

Included in delivery:

- 4 customized aluminum profile sections (F)
- 4 Edge Connectors (E) (pre-assembled) with allen wrench (G)
- Wall Hooks (H)



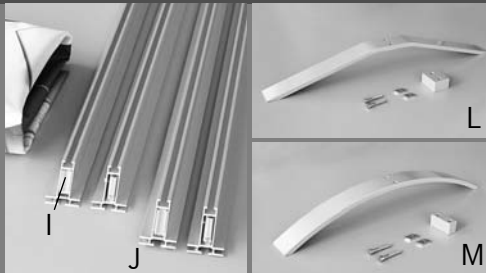
1. Take 2 aluminum profile sections (F) with pre-assembled Edge Connectors (E) and place together to form a right angle.
2. Use the allen wrench (G) to hand tighten the screws.
3. Repeat step 1 and 2 to complete the frame. You may need to make adjustments to make frame join precisely.



Needed for wall mounting:  
Wall plugs and screws  
Screwdriver

1. Hold assembled frame into position on wall. With the aid of another person, screw hooks into correct position on the wall.
2. Hooks should be installed using the suggestions below:
  - a. There should be no more than 78.7" (200cm) of space between each hook.
  - b. Leaving 7.9" (20cm) of space from the hooks to the corners is recommended.
3. Once frame is installed, mount print.

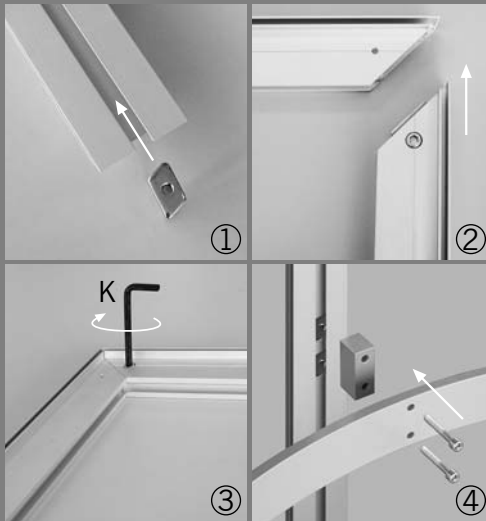
## Q-Frame<sup>®</sup> Tex 50 - Free-Standing w/ Base



Remove all components and review to ensure all have been received and none are damaged or missing.

Included in delivery:

- 4 customized aluminum profile sections (J)
- 4 Edge Connectors (I) (pre-assembled) with allen wrench (K)
- Purchased base:
  - Angled Base incl. mounting accessories (L)
  - Semicircular Base incl. mounting accessories (M)



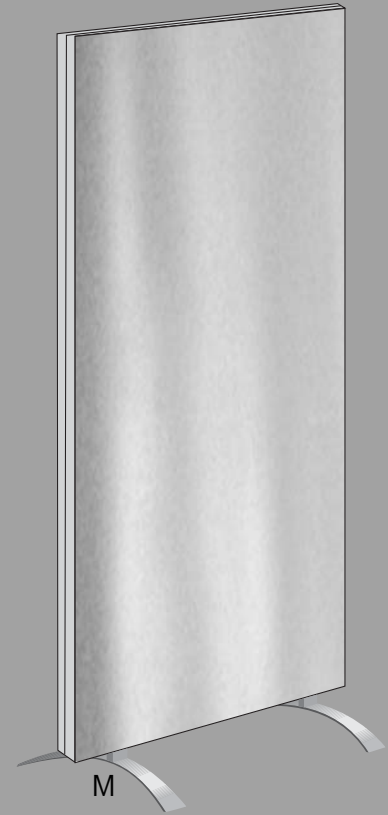
1. From the mounting accessories provided with your selected base, take the 2 steel stones and slide into the aluminum profile section being used for the bottom of the frame. These will aid in mounting the frame to the base.

2. Take 2 aluminum profile sections (J) with pre-assembled Edge Connectors (I) and place together to form a right angle.

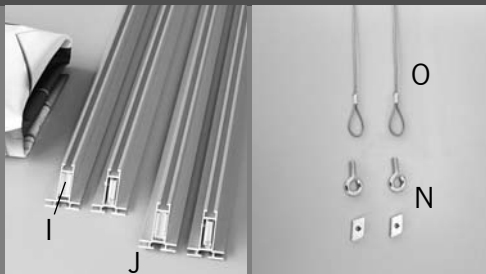
3. Use the allen wrench (K) to hand tighten the screws. Repeat step 1 and 2 to complete the frame. You may need to make adjustments to make frame join precisely.

4. Take the spacers and screws from the mounting accessories along with your selected base and line up with the steel stones already installed. Pass the screw through the base and spacer and secure into the stone. This will attach the base to the frame. Repeat for second base.

5. Once frame is completed, mount print.



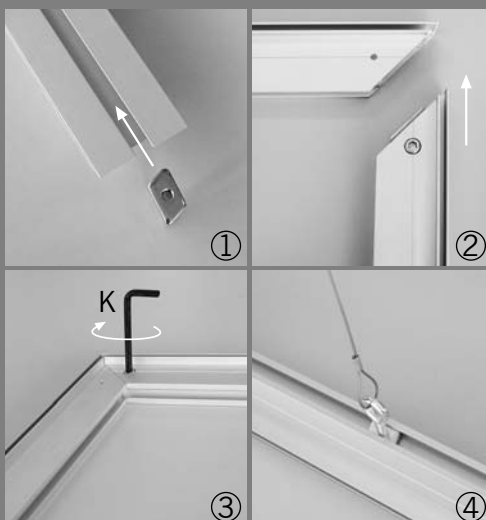
## Q-Frame<sup>®</sup> Tex 50 - Ceiling Mounting



Remove all components and review to ensure all have been received and none are damaged or missing.

Included in delivery:

- 4 customized aluminum profile sections (J)
- 4 Edge Connectors (I) (pre-assembled) with allen wrench (K)
- Ceiling Mount incl. mounting accessories (N)
- Steel Rope (O) (if applicable)



1. From the mounting accessories provided, take the 2 steel stones and slide into the aluminum profile section being used for the top of the frame.

2. Take 2 aluminum profile sections (J) with pre-assembled Edge Connectors (I) and place together to form a right angle.

3. Use the allen wrench (K) to hand tighten the screws. Repeat step 1 and 2 to complete the frame. You may need to make adjustments to make frame join precisely.

4. Take the hooks from the mounting accessories (N) and screw into the steel stones that were installed previously.

5. Once frame is completed, mount print then hang from ceiling.

